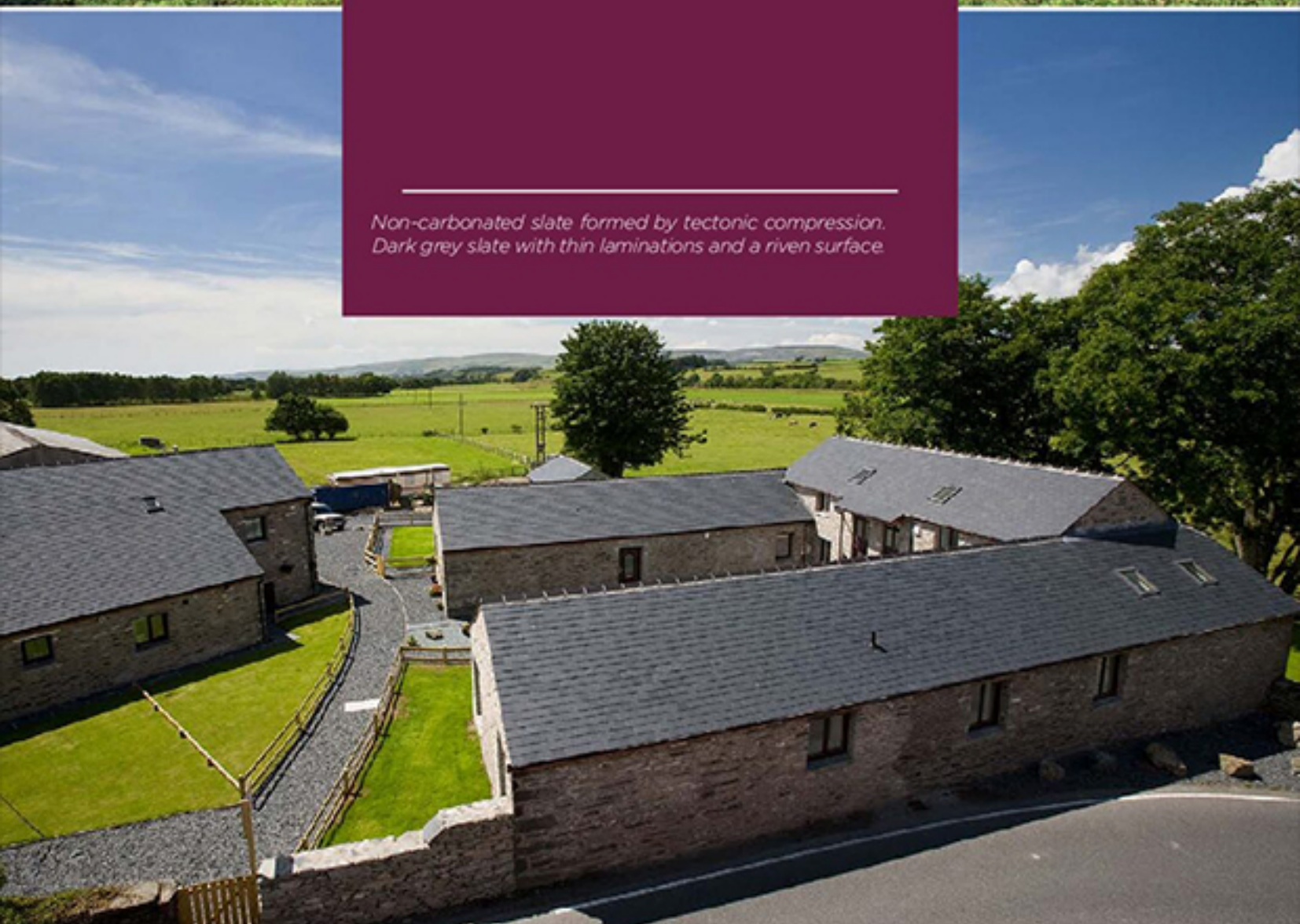





## Williamsburg #14

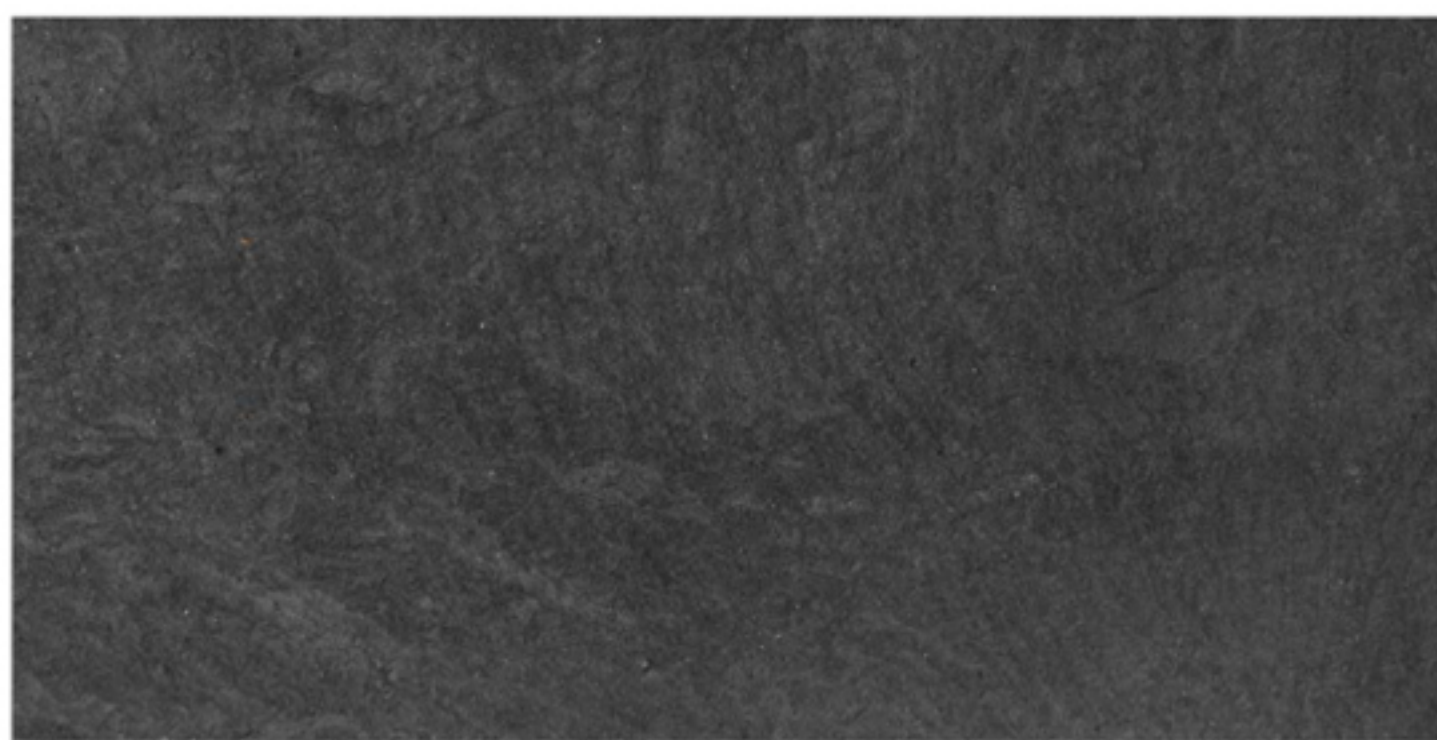
*Non-carbonated slate formed by tectonic compression.  
Dark grey slate with thin laminations and a riven surface*



 Quarry Las Fuentes. Benuza (León)  
Spain.

 Operating since 1985.

 Sizes: 20x20 - 60x45 cm  
Thickness: 5 - 6.5 - 7.5 - 9 mm



### Formats



### Selections



### Technical specifications

ABSORPTION	CARBONATE NON CARBONATED	MOR CHARACTERISTIC	SO <sub>2</sub> EXPOSURE TEST	THERMAL CYCLE TEST	FREEZE THAW TEST
0,21% Code : W1 (< 0,6%)	Complies (< 1,5%)	Longitudinal 43,5 MPA Transverse 45,7 MPA	S1	T1	Fullfil < 0,6%

### International certifications



European Standard: EN 12326 | American Standard: ASTM C406-15